



ROYAL SUITE

The one bedroom Royal Suite, located on the 10th floor adjacent to the Penthouse Suite, offers spectacular views over Kensington Gardens and London beyond. This spacious suite, boasts a walk-in closet, ideal for long stays, and a separate living area with kitchenette and dining area for entertaining.

GARDEN SUITE

With stunning views of Kensington Gardens and Hyde Park, this seventh floor Master Suite can be booked as a one, two or three bedroom suite. Perfect for long stays, the Garden Suite comprises of an independent, spacious lounge area, an oversized walk-in dressing room and a luxurious bathroom.

PENTHOUSE SUITE

This contemporary Master Suite, with iconic Kensington High Street views from the 10th floor, can be booked either as a one or two bedroom suite. The modern Penthouse Suite comprises of a large independent lounge with dining area and kitchenette to make for a comfortable stay.

GOODWOOD SUITE

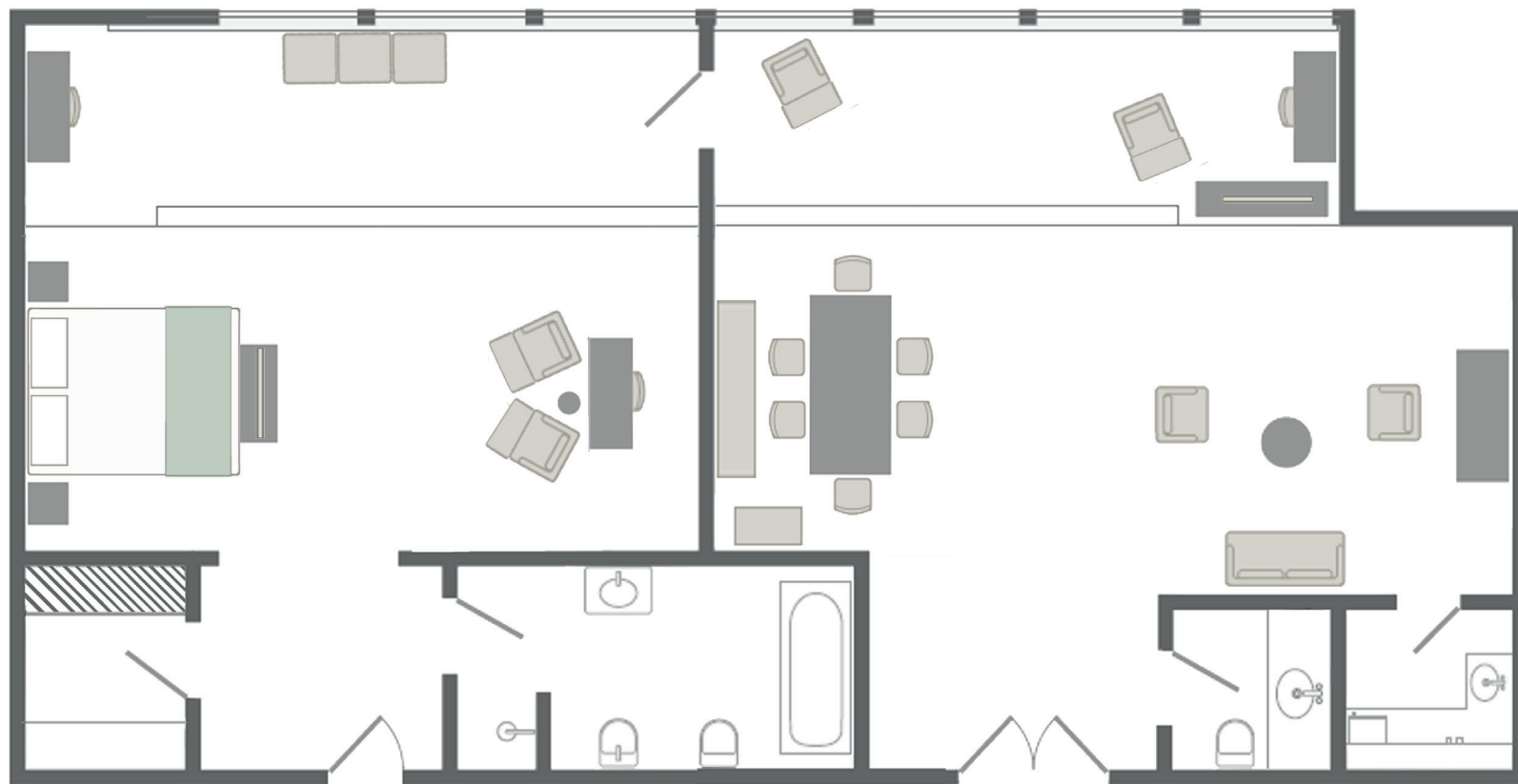
Overlooking Kensington Gardens and Kensington High Street, this one bedroom stylish suite features an intimate living and dining area with kitchenette to make for a restful stay. Located on the eighth floor, the Goodwood Suite can also transform into a spacious two bedroom suite for added space.

ULTIMATE SUITE

The impressive Penthouse and Royal Suites can be conveniently joined together to create a large and exclusive space on the 10th floor. Located opposite each other, there is a private entrance and corridor for extra privacy and the additional benefit of having a spacious King Room connecting to the Penthouse Suite, turning this already impressive area into a three bedroom, two living room suite.

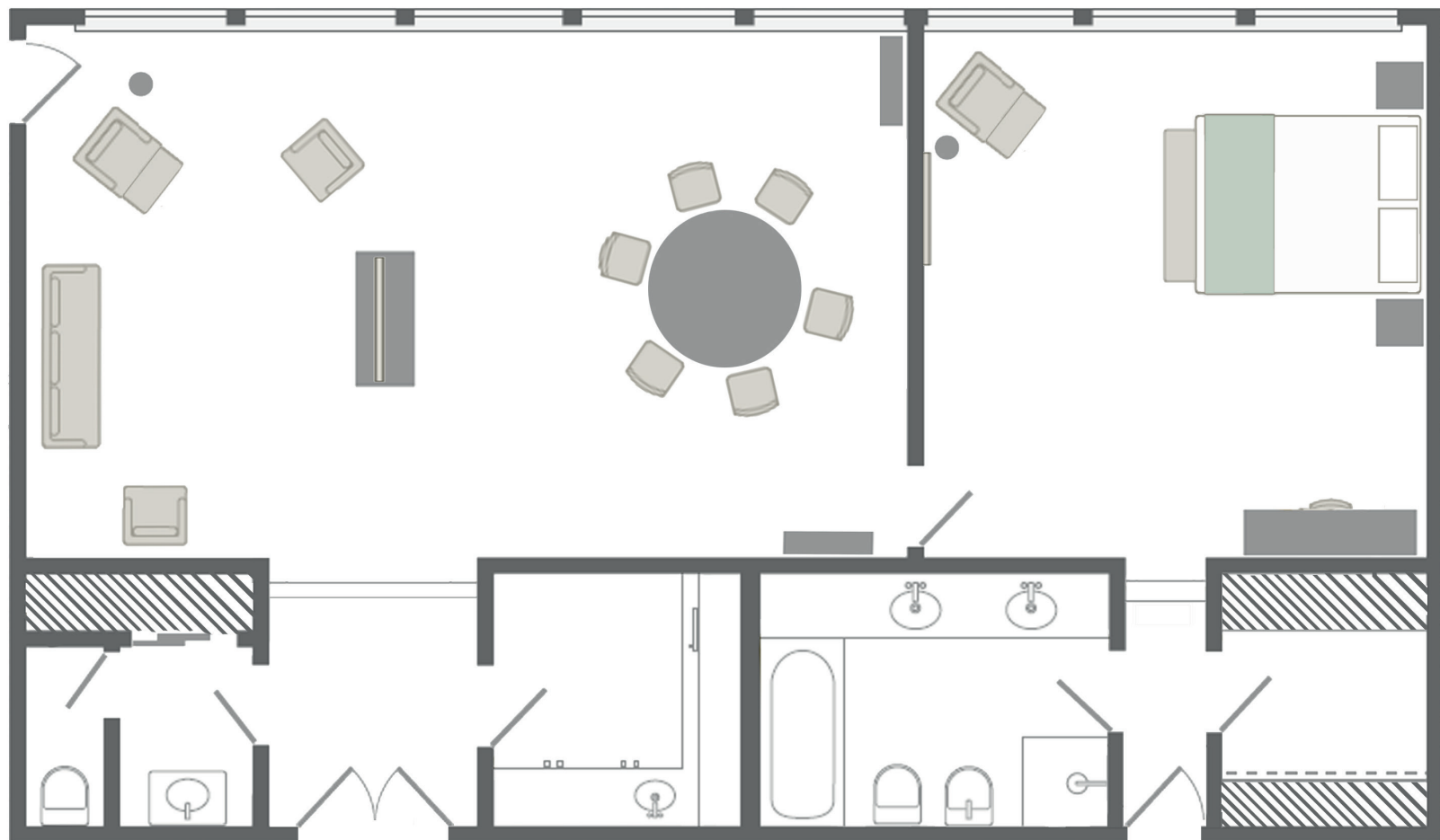
ROYAL SUITE

140m²



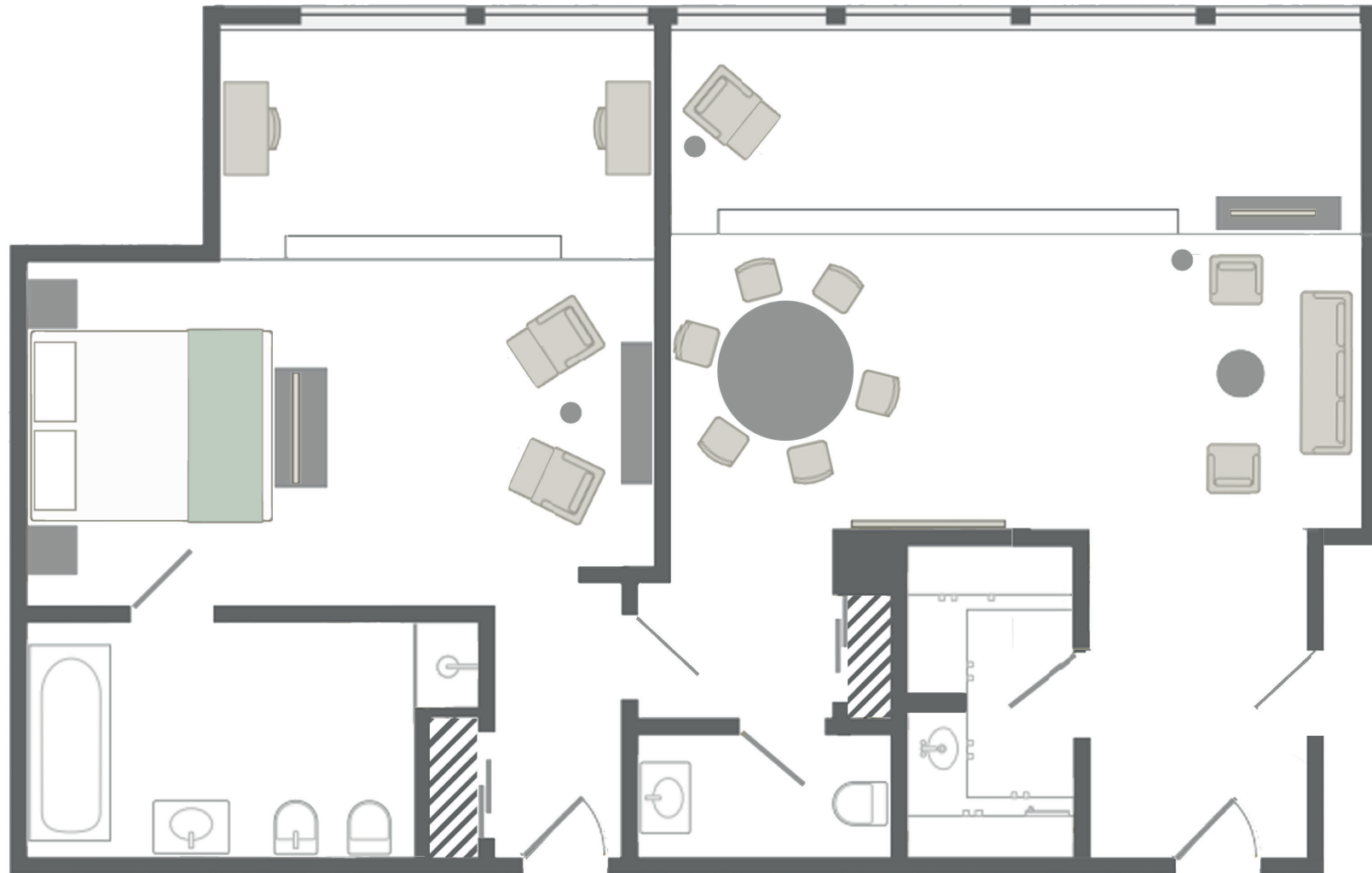
GARDEN SUITE

120m²



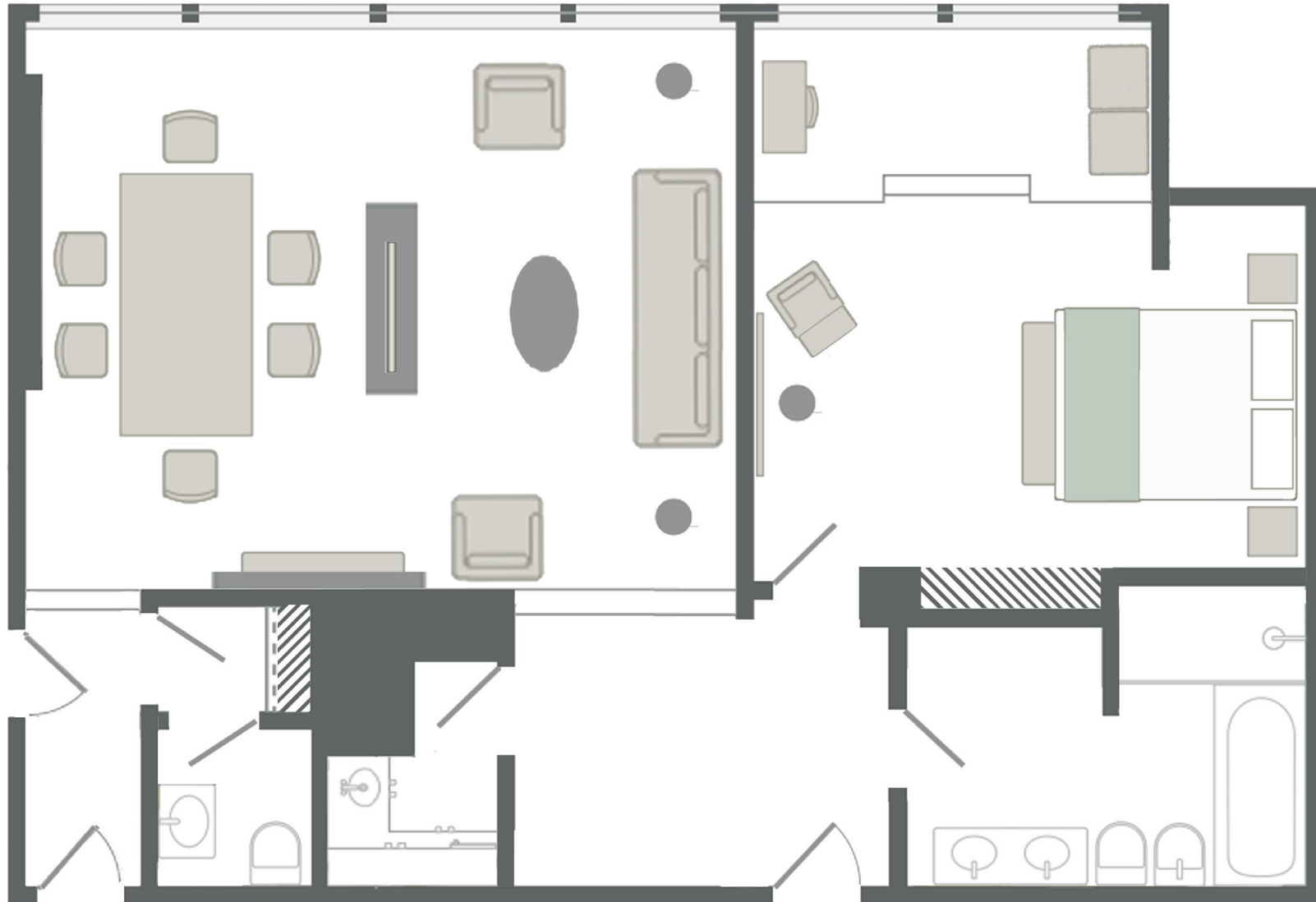
PENTHOUSE SUITE

110m²



GOODWOOD SUITE

110m²



ULTIMATE SUITE

290m²

Royal Suite
140m²



Penthouse Suite
110m²

Royal Deluxe
27m²

