



ROYAL GARDEN HOTEL

LONDON

DISTINCTIVE
SUITES

ROYAL GARDEN HOTEL

The Royal Garden Hotel, in leafy Kensington, is one of the most restful five-star hotels London has to offer. Whether you are looking for a relaxing London break or luxurious location from which to explore, at the Royal Garden Hotel you'll find distinctive features and five-star service without the stuffiness.

Sleep soundly in one of our 17 stylish suites with stunning views over Hyde Park and London's iconic skyline. Choose from the understated Park Suites to the more opulent Master Suites — ideal for longer stays and entertaining.

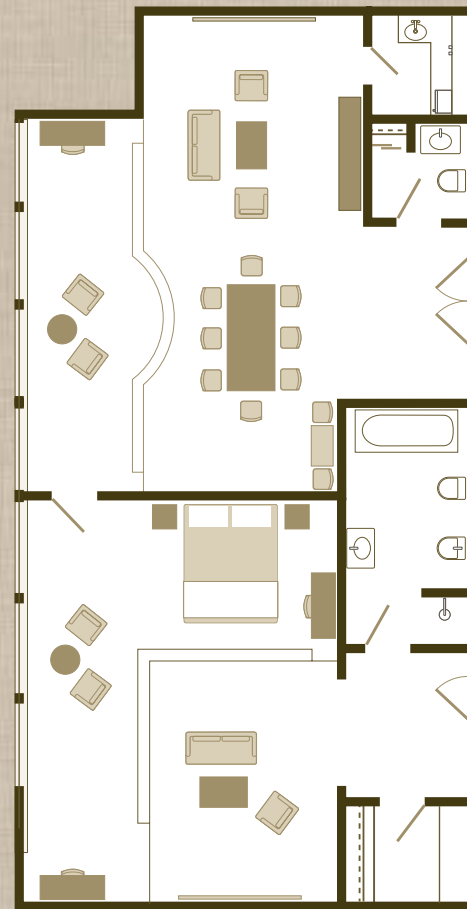




PARK SUITE

ROYAL SUITE

The one bedroom Royal Suite, located on the 10th floor adjacent to the Penthouse Suite, offers spectacular views over Kensington Gardens and London beyond. This spacious suite, boasts a walk-in closet, ideal for long stays, and a separate living area with kitchenette and dining area for entertaining.

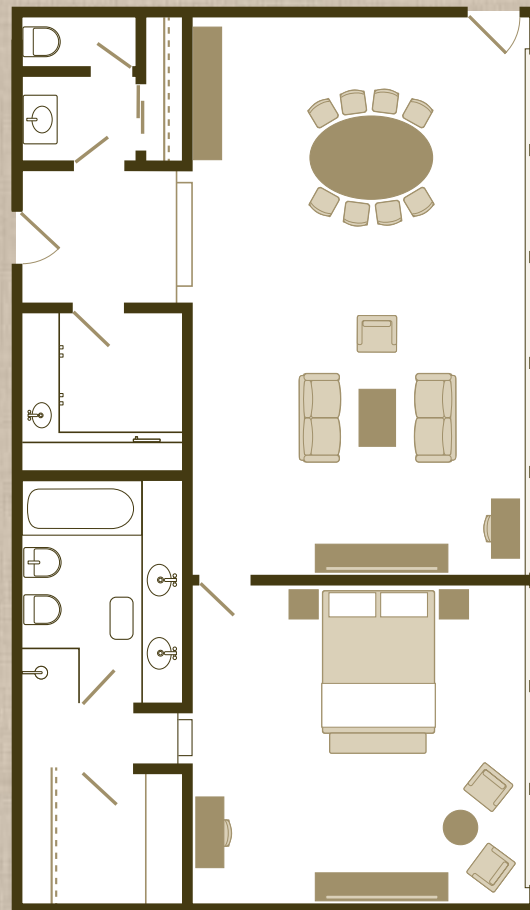


140 Sq.m



GARDEN SUITE

With stunning views of Kensington Gardens and Hyde Park, this seventh floor Master Suite can be booked as a one, two or three bedroom suite. Perfect for long stays, the Garden Suite comprises of an independent, spacious lounge area, an oversized walk-in dressing room and a luxurious bathroom.

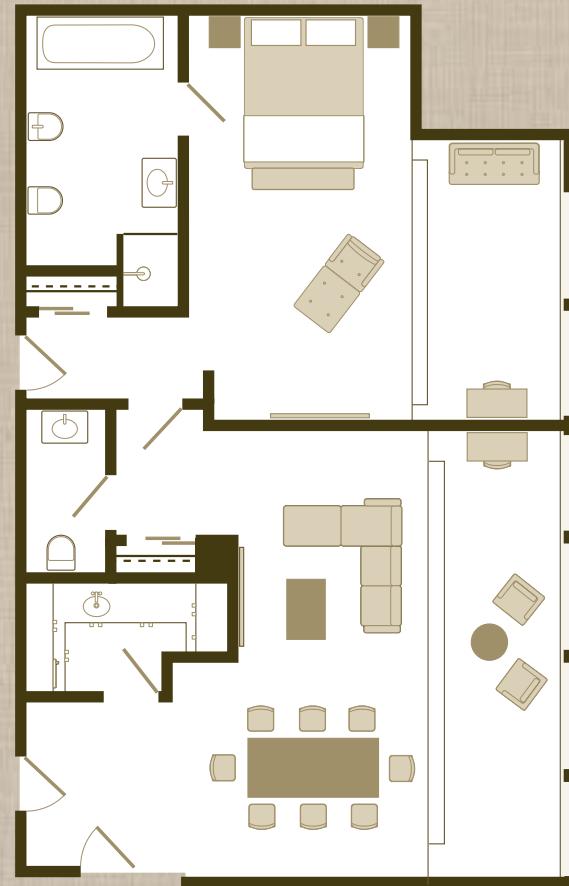


120 Sq.m
Connects to two Garden Rooms



PENTHOUSE SUITE

This contemporary Master Suite, with iconic Kensington High Street views from the 10th floor, can be booked either as a one or two bedroom suite. The modern Penthouse Suite comprises of a large independent lounge with dining area and kitchenette to make for a comfortable stay.

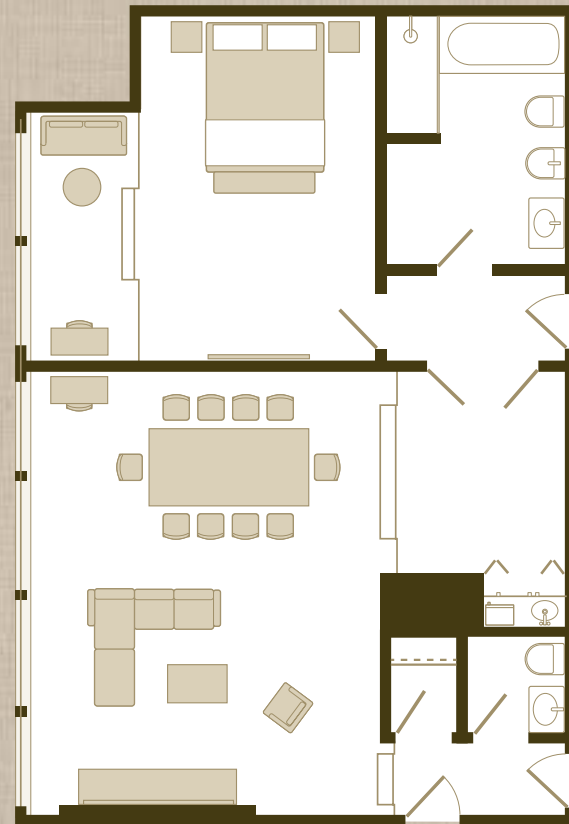


110 Sq.m
Connects to King Room



GOODWOOD SUITE

Overlooking Kensington Gardens and Kensington High Street, this one bedroom stylish suite features an intimate living and dining area with kitchenette to make for a restful stay. Located on the eighth floor, the Goodwood Suite can also transform into a spacious two bedroom suite for added space.



100 Sq.m
Connects to Garden Room



PARK SUITES

With 13 opulently styled Park Suites to choose from, each boasts a bedroom with raised seating area and stunning views of Kensington Gardens and Hyde Park. Located on floors two to nine, each suite benefits from a spacious bedroom with luxurious bathroom, a separate lounge and dining area as well as a hall with an adjoining guest bathroom. There is also the opportunity to create extra sleeping space by transforming into a two bedroom suite with a connecting room.



KEY FEATURES

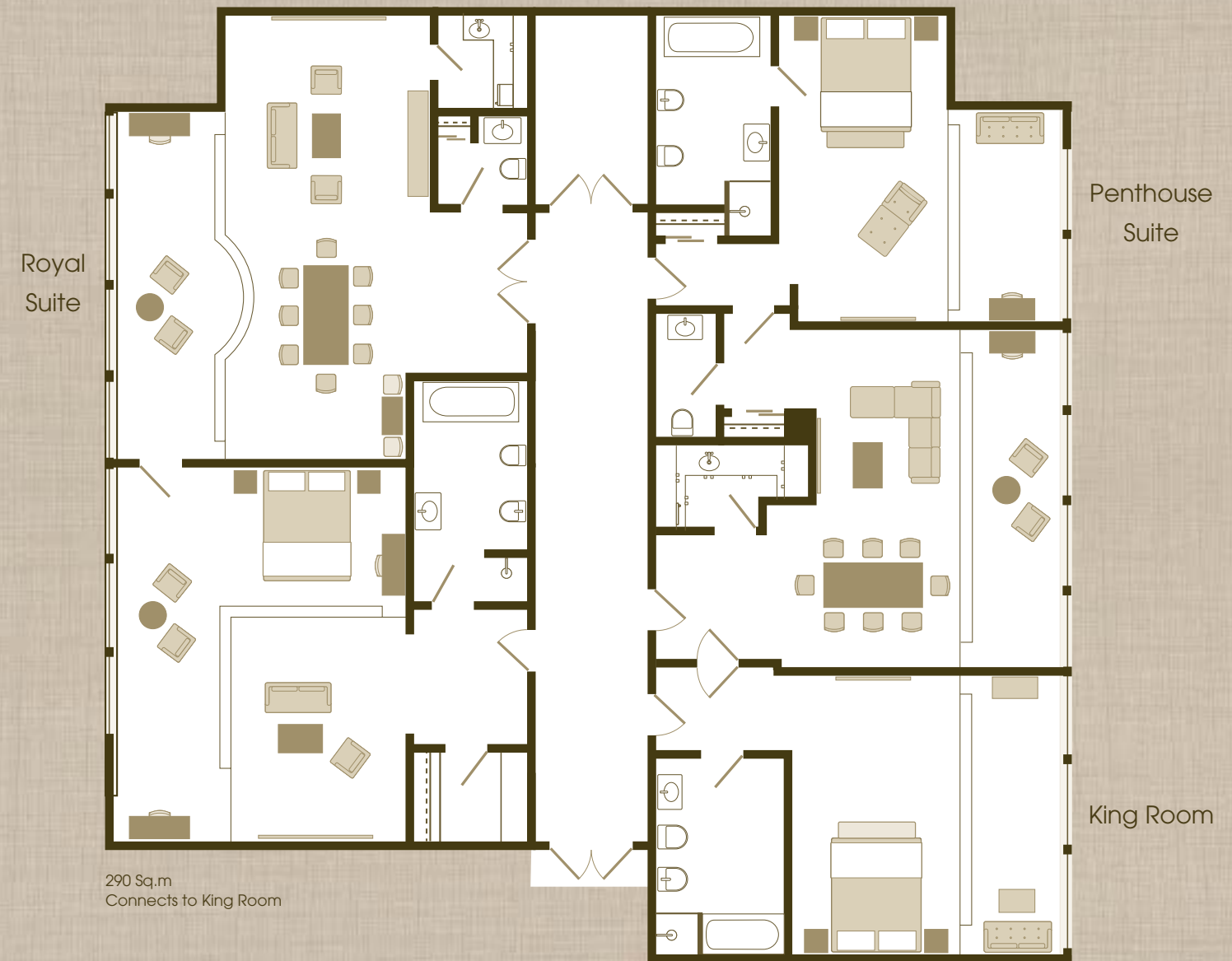
- Average size is 59 Sq.m with separate bedroom and lounge
- Connect to Garden Twin Rooms
- 13 suites located on floors two to nine
- Views over Kensington Gardens and London's skyline
- Spacious bathroom with bath and walk-in shower – many with extra guest bathroom



ULTIMATE SUITE

PENTHOUSE AND ROYAL SUITES

The impressive Penthouse and Royal Suites can be conveniently joined together to create a large and exclusive space on the 10th floor. Located opposite each other, there is a private entrance and corridor for extra privacy and the additional benefit of having a spacious King Room connecting to the Penthouse Suite, turning this already impressive area into a three bedroom, two living room suite.



ENTERTAINMENT

With stunning views over Hyde Park and London's skyline at the Royal Garden Hotel, you can dine in our award-winning restaurants, rejuvenate with a spa treatment in our Health Club or discover something new about London with a little help from our Concierge.



DINING

At the Royal Garden Hotel you will find a culinary option for every taste and preference.

Whether you are looking for a quick bite at Bertie's Bar, an elegant afternoon tea in the Park Terrace lounge or a memorable gourmet dinner at the highly renowned fine-dining Chinese restaurant Min Jiang, there are three bars and two award-winning restaurants for you to enjoy.

If you prefer something a little more private, our dedicated Room Service are also on hand to offer a menu full of choice for many tastes or create bespoke dishes to meet specific needs.



RELAXATION

Stay rejuvenated with a visit to the Health Club offering modern gym facilities and spa treatments. Choose from a range of pampering treatments or a workout with one of our personal trainers. If you prefer keeping fit in the great outdoors, you can go running in Kensington Gardens and Hyde Park next door.



PERSONAL TOUCH

Our Concierge is here to make the impossible happen to ensure our guests experience the best of London, from obtaining sold out theatre tickets to booking a table at an exclusive London restaurant. A host of services are available through our Concierge to make any stay as enjoyable as possible including:

- Tickets to sporting events
- Restaurant reservations
- Opera, theatre and concert tickets
- Private chauffeur service
- Personal shopper at luxurious department stores and shops
- Private tours of London and the countryside
- Personalised bespoke London itinerary

EXPLORE

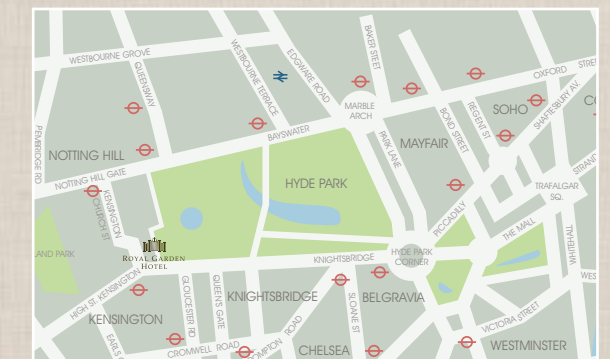
With famous London attractions a short walk from the hotel, the bustling West End a 10 minute taxi-ride away and a wealth of luxury shopping destinations close by, the Royal Garden Hotel is perfectly positioned to experience the London way of life.

SHOPPING

Step out and enjoy the eclectic shopping experience of Kensington High Street with designer boutiques and high street favourites. Venture further to the fashionable districts of Knightsbridge or Mayfair and shop in Harrods, Harvey Nichols and Selfridges, all a 5-10 minute taxi-ride away.

ATTRACTIONS

Take your pick with a host of famous London attractions all within walking distance to the Royal Garden Hotel. Take a stroll in Kensington Palace and Gardens next door, or visit the Victoria & Albert Museum, Royal Albert Hall and Natural History Museum around the corner.



BOOK YOUR STAY

Please call +44 (0)20 7937 8000 or email reservations@royalgardenhotel.co.uk



2-24 KENSINGTON HIGH STREET LONDON W8 4PT
TEL +44 (0)20 7937 8000 FAX +44 (0)20 7361 1991
WWW.ROYALGARDENHOTEL.CO.UK

WORLDHOTELS
deluxe